

# Committed to Excellence

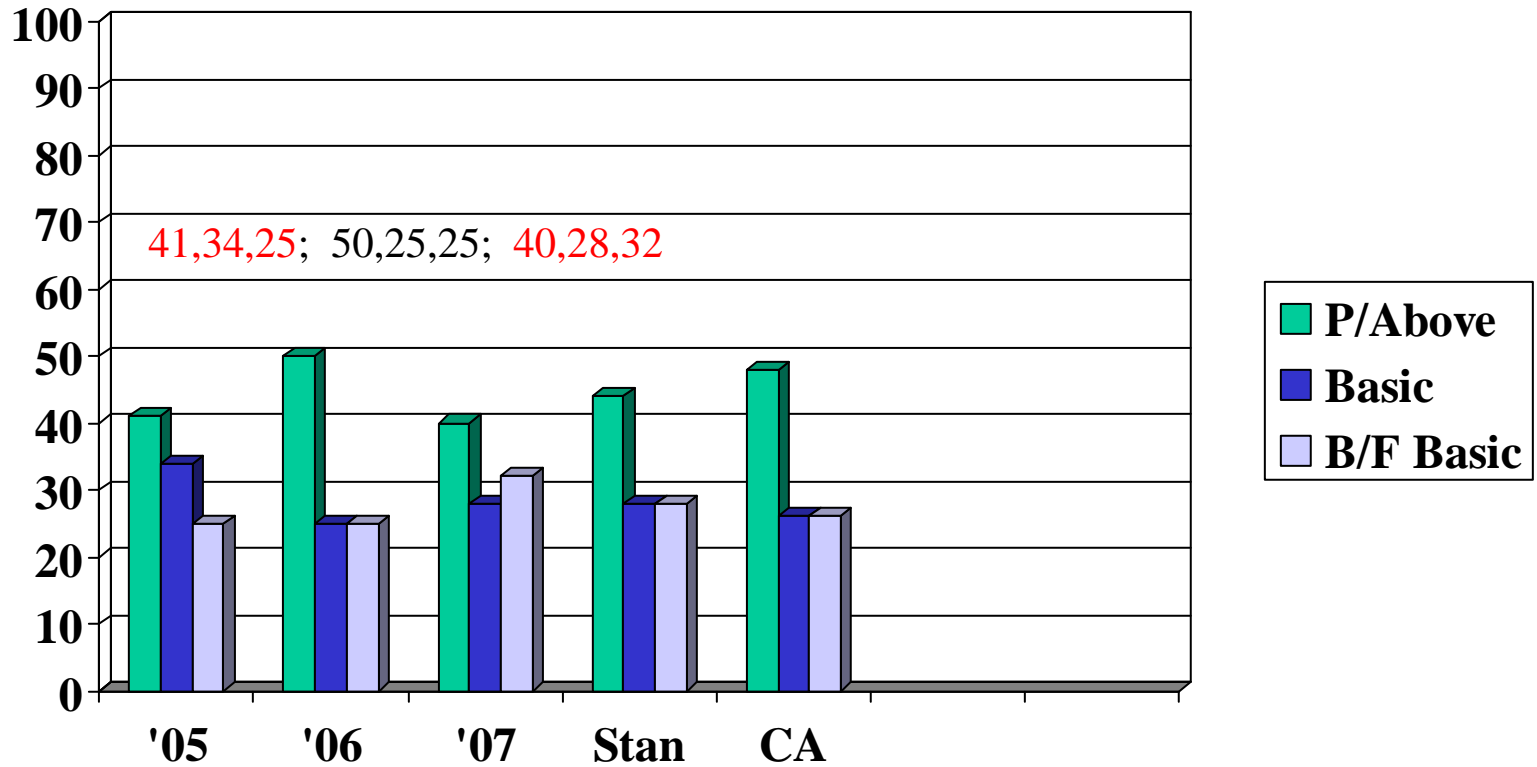


## STAR TEST RESULTS 2007

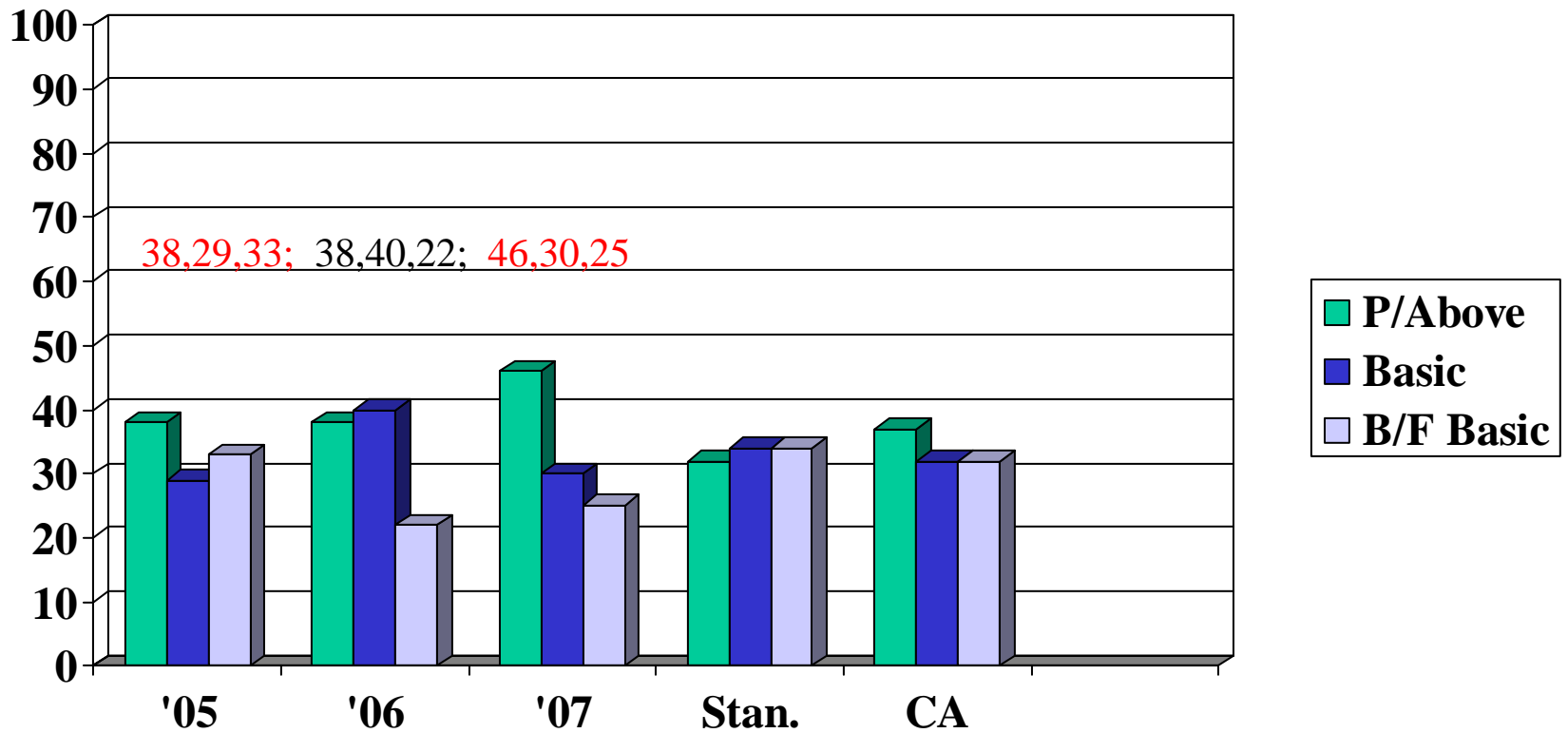
# English-Language Arts



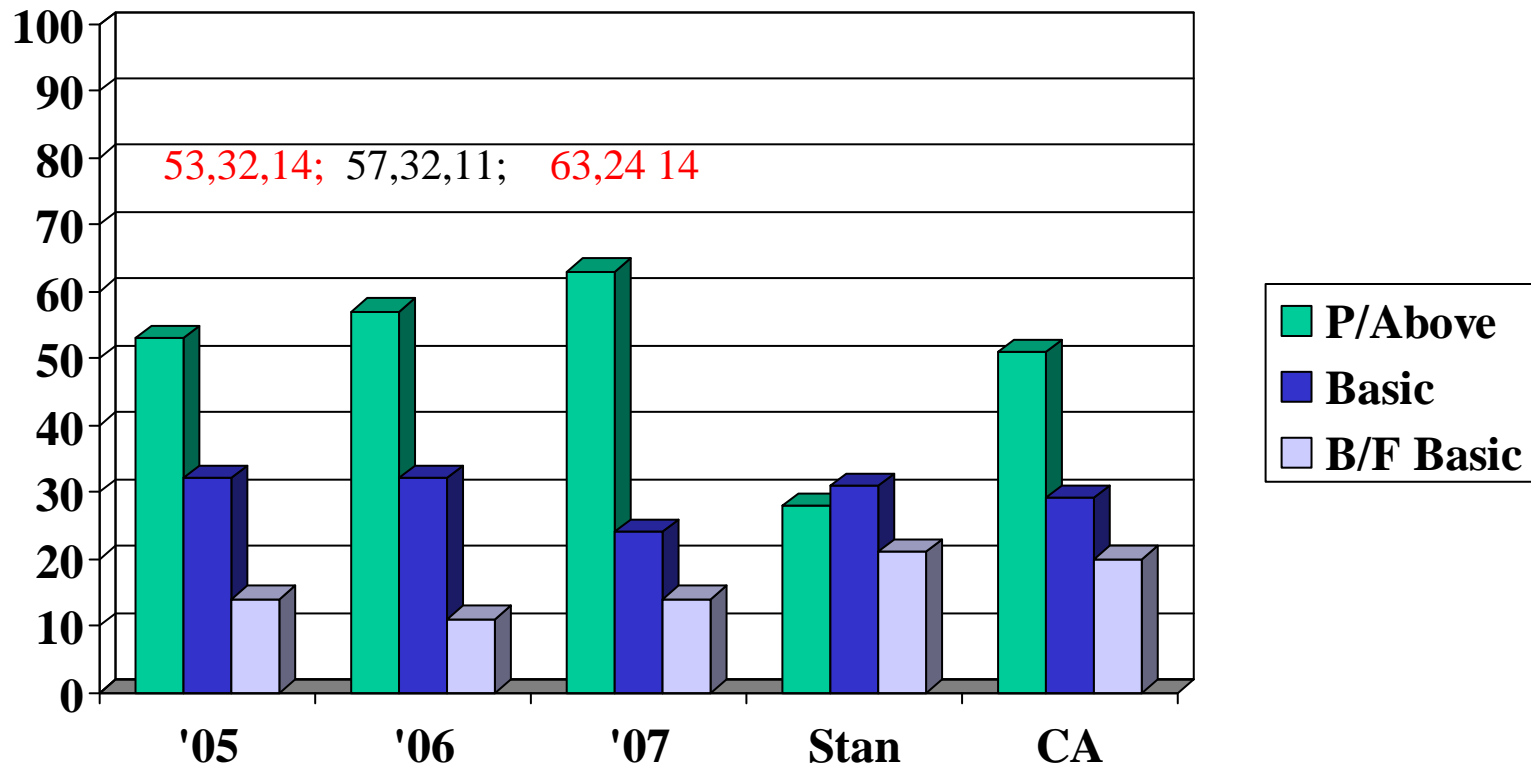
# Grade 2 ELA



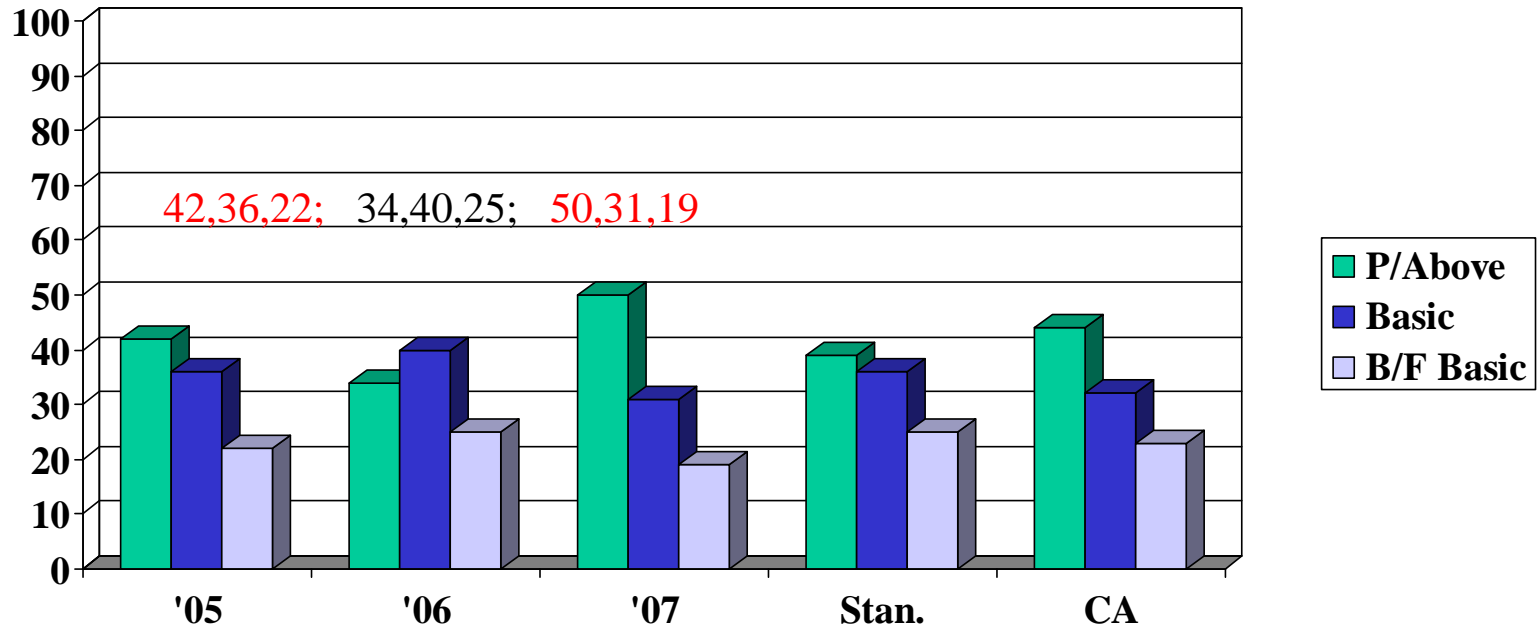
# Grade 3 -ELA



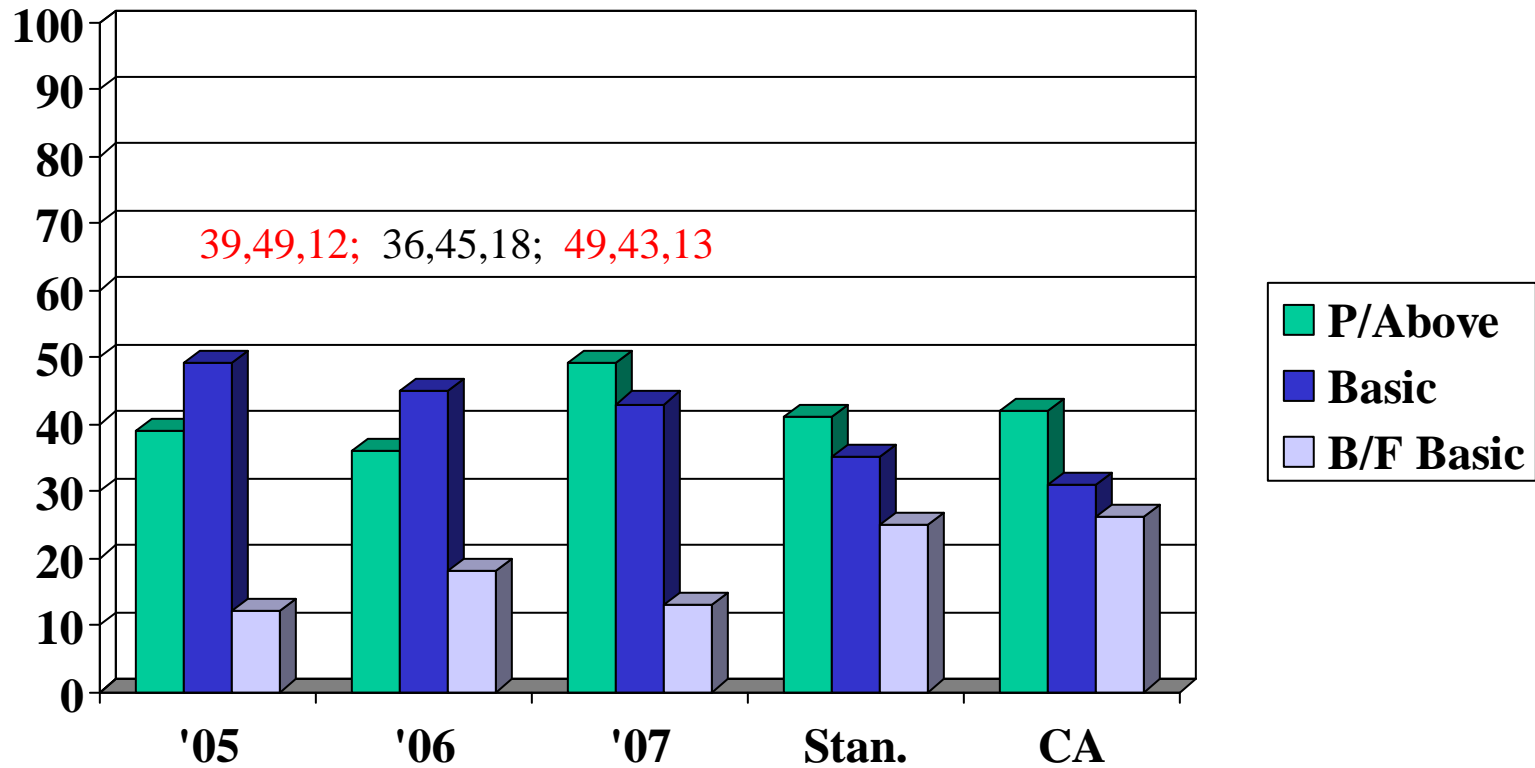
# Grade 4 - ELA



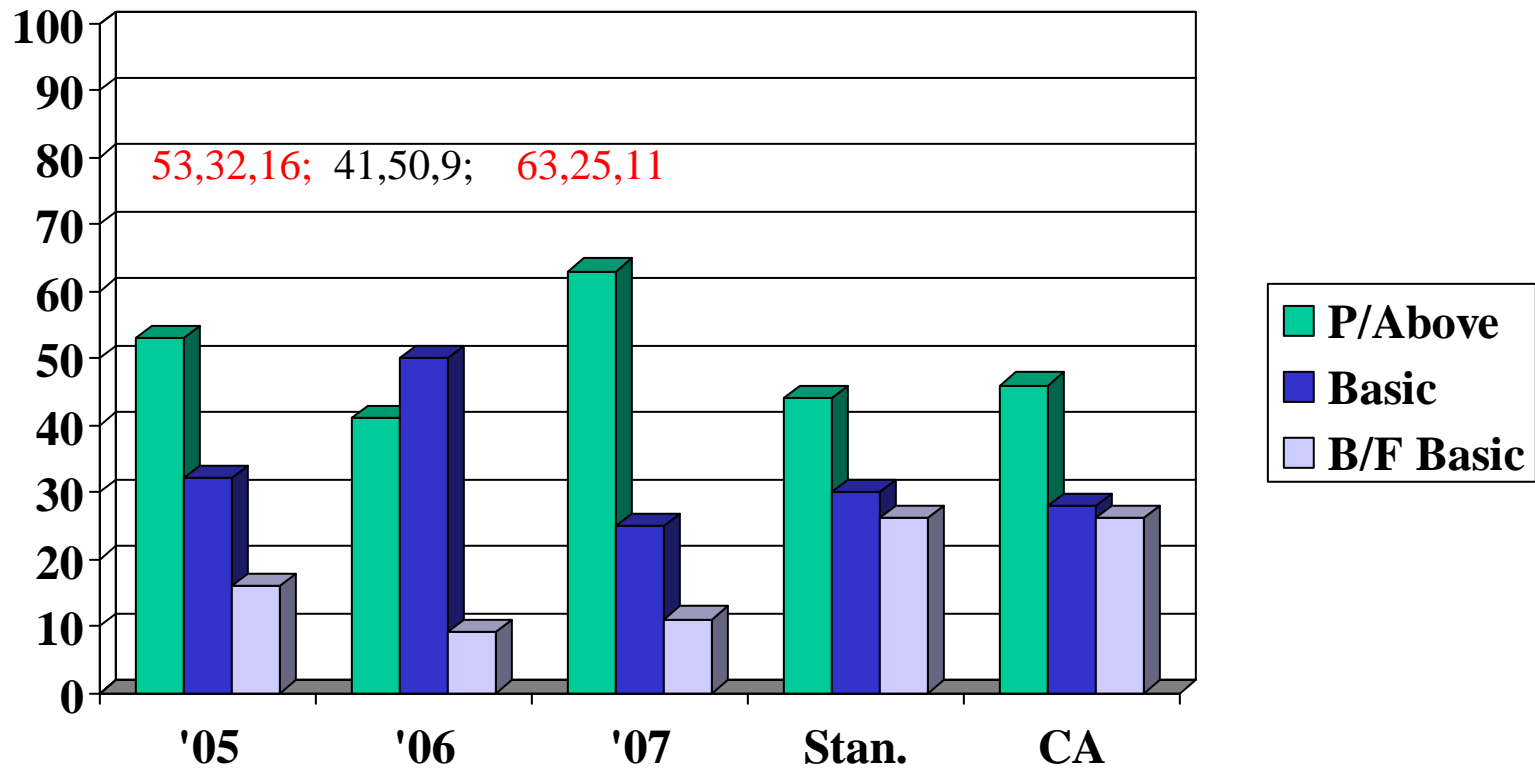
# Grade 5 - ELA



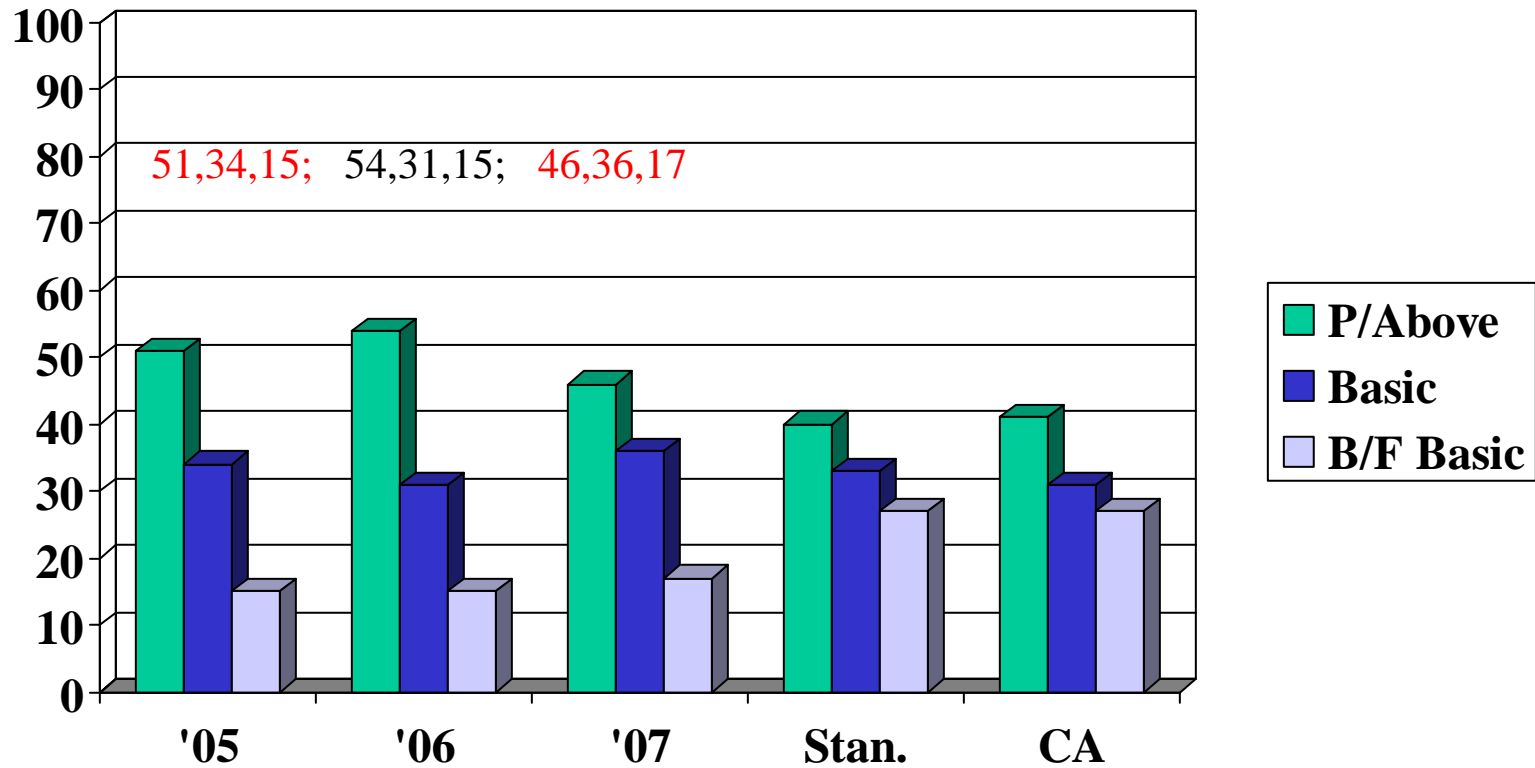
# Grade 6 - ELA



# Grade 7 - ELA



# Grade 8 - ELA





# Whole School

53.1% of students

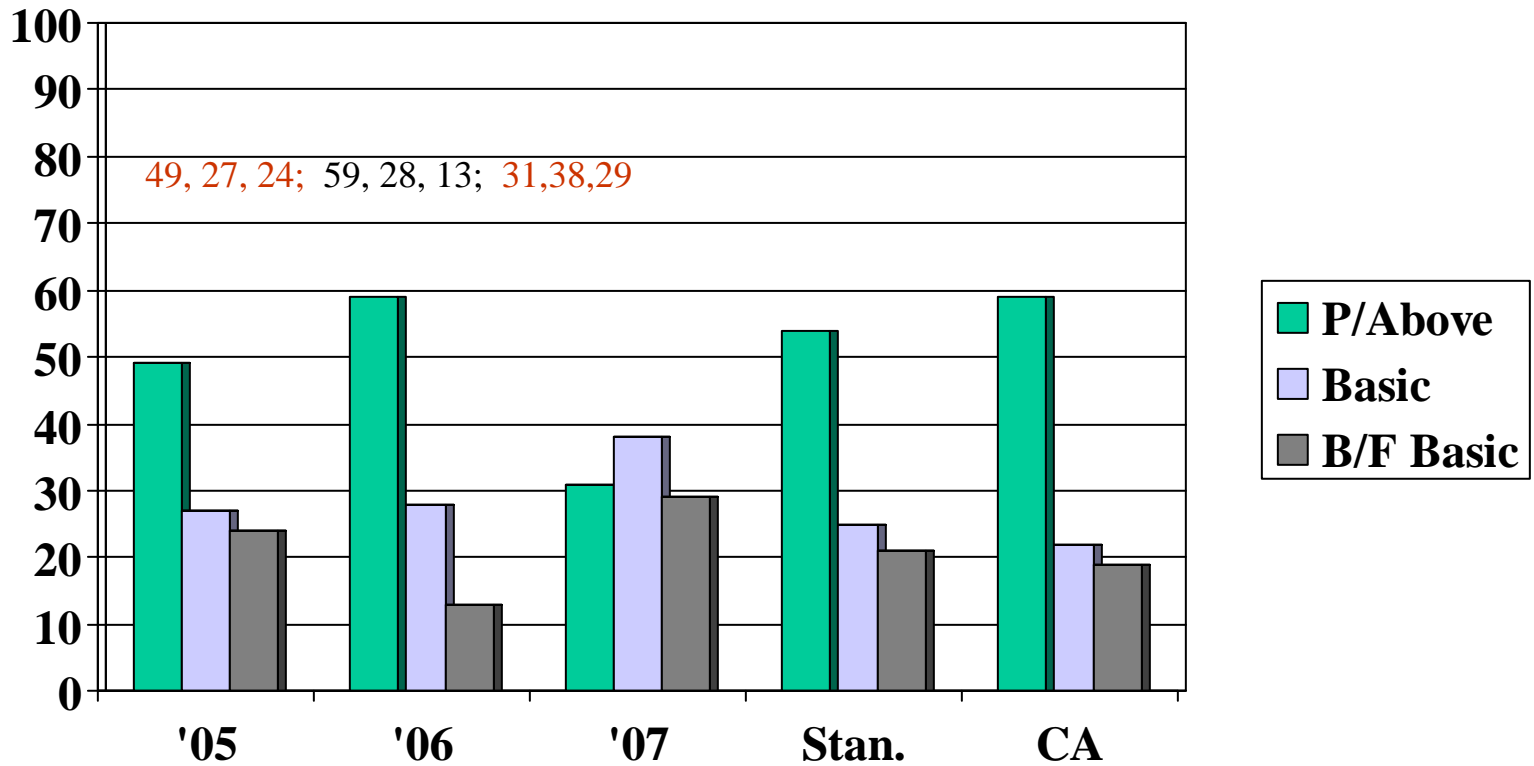
scored

proficient or above in ELA

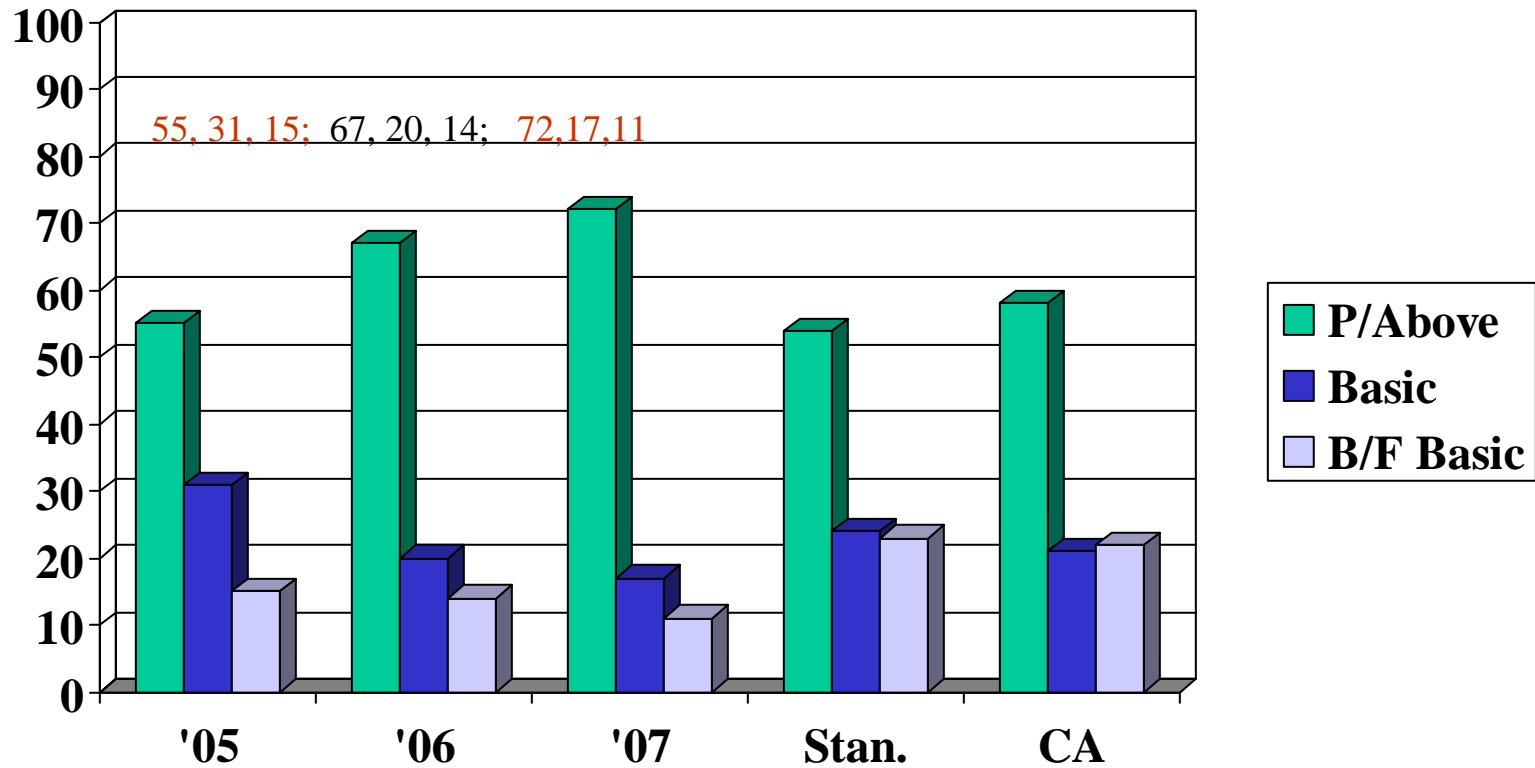
# Mathematics



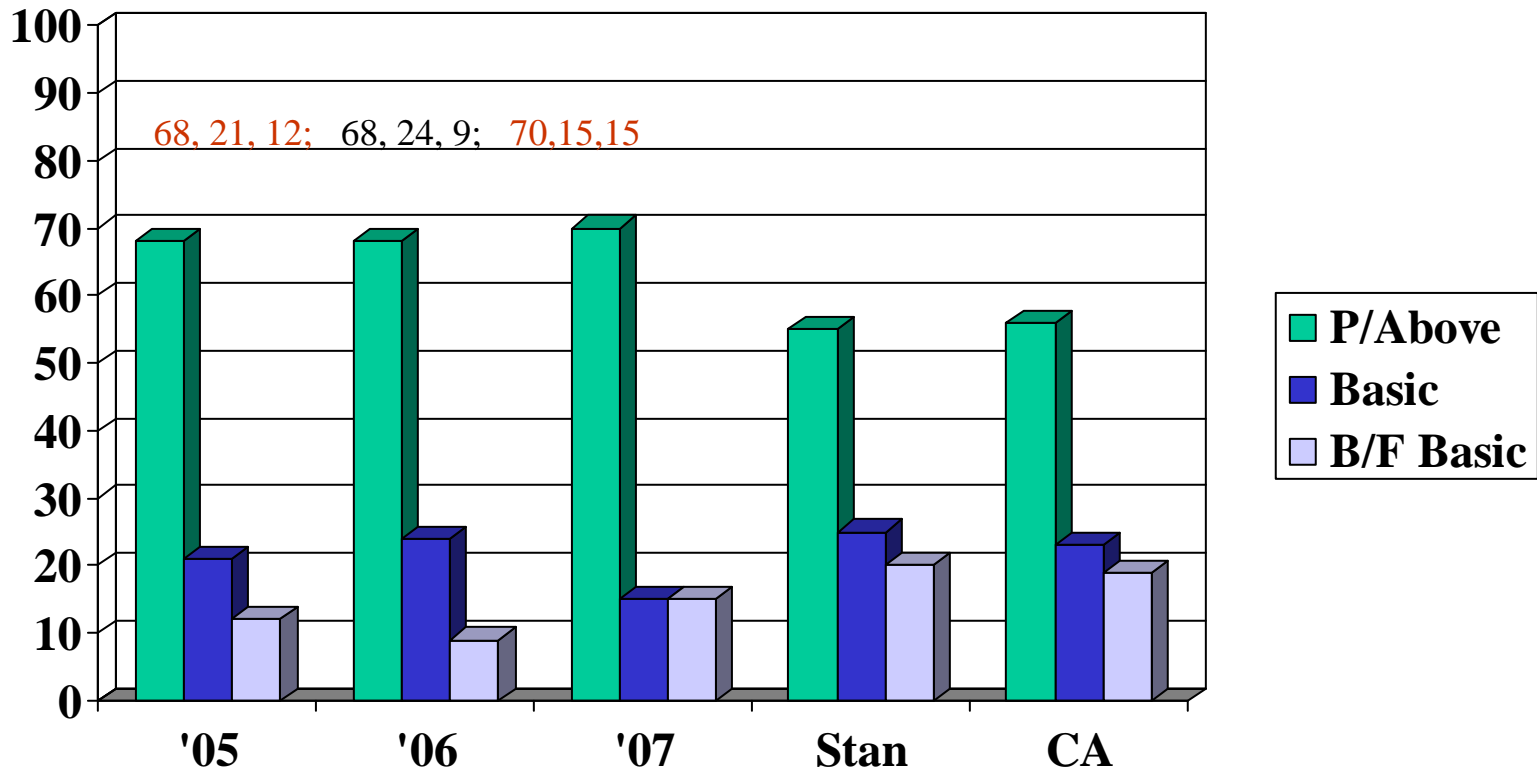
# Grade 2 Mathematics



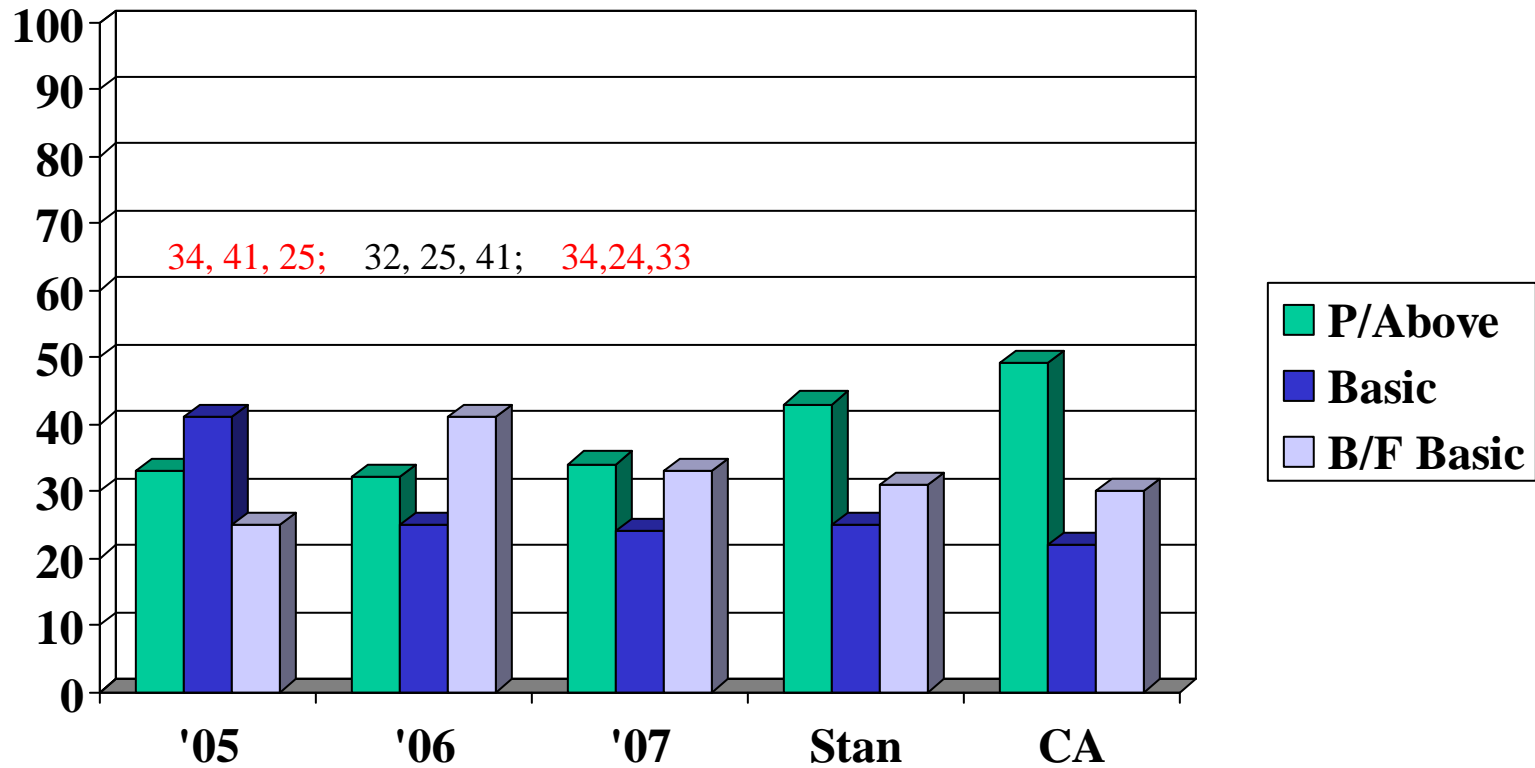
# Grade 3 - Mathematics



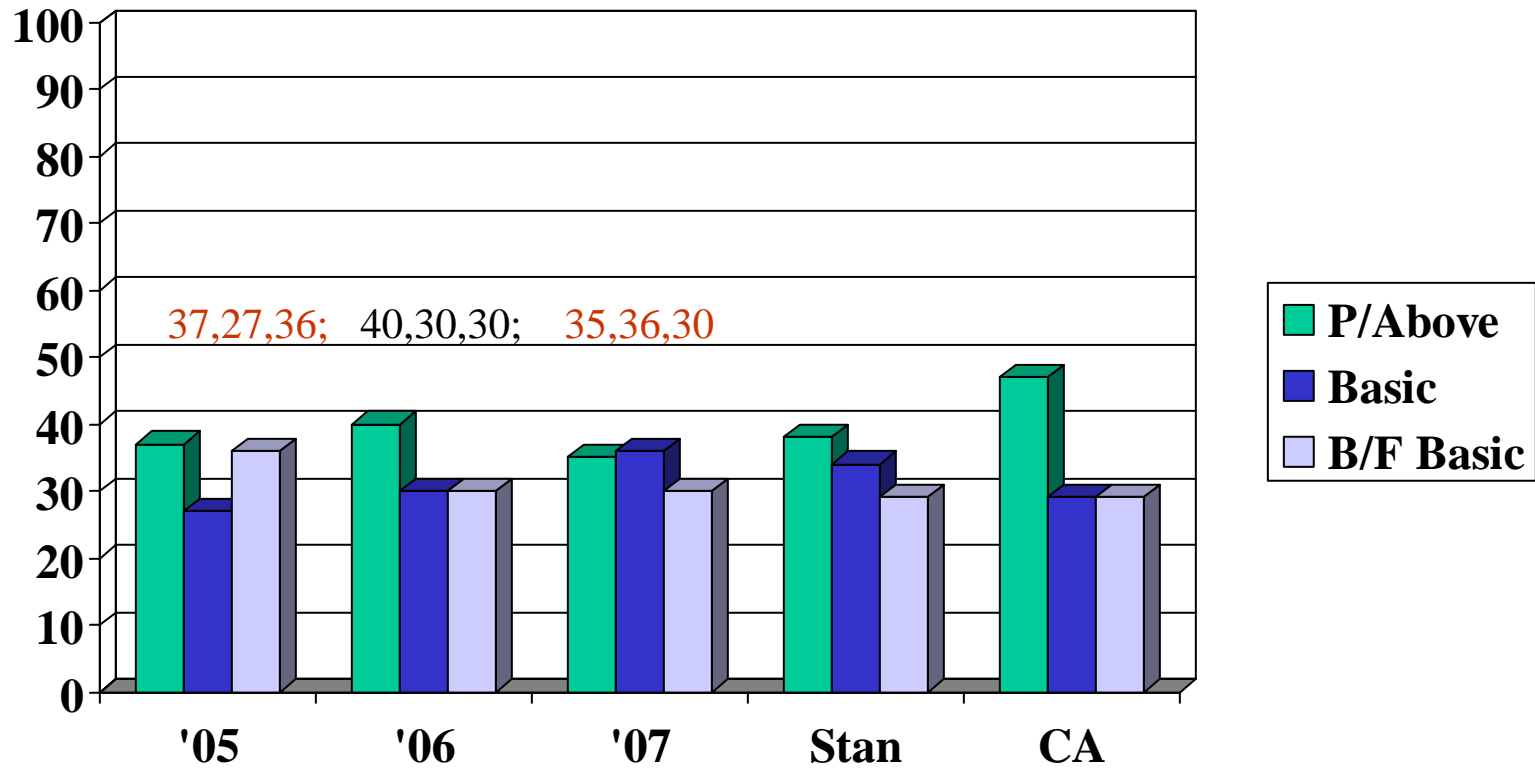
# Grade 4 - Mathematics



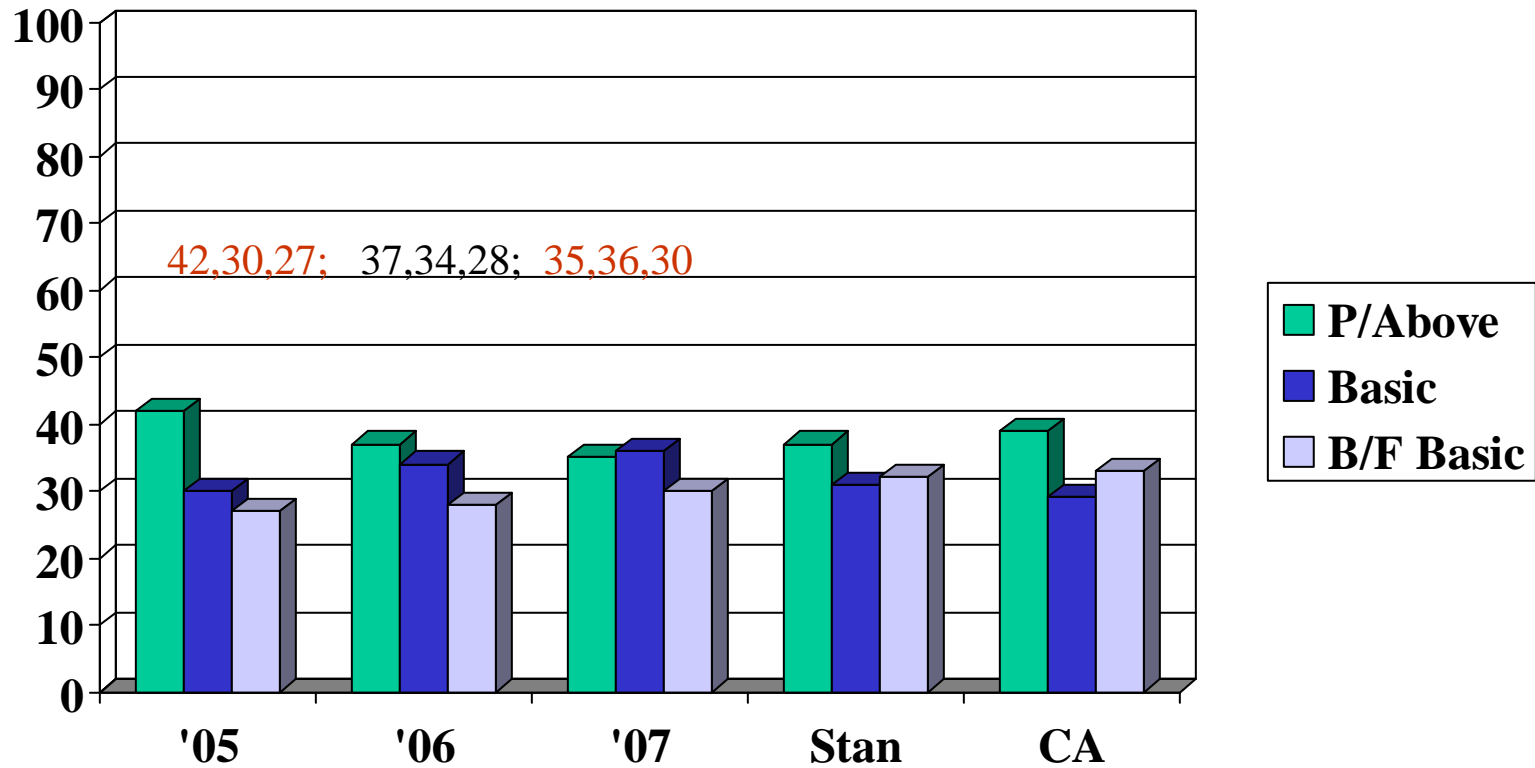
# Grade 5 - Mathematics



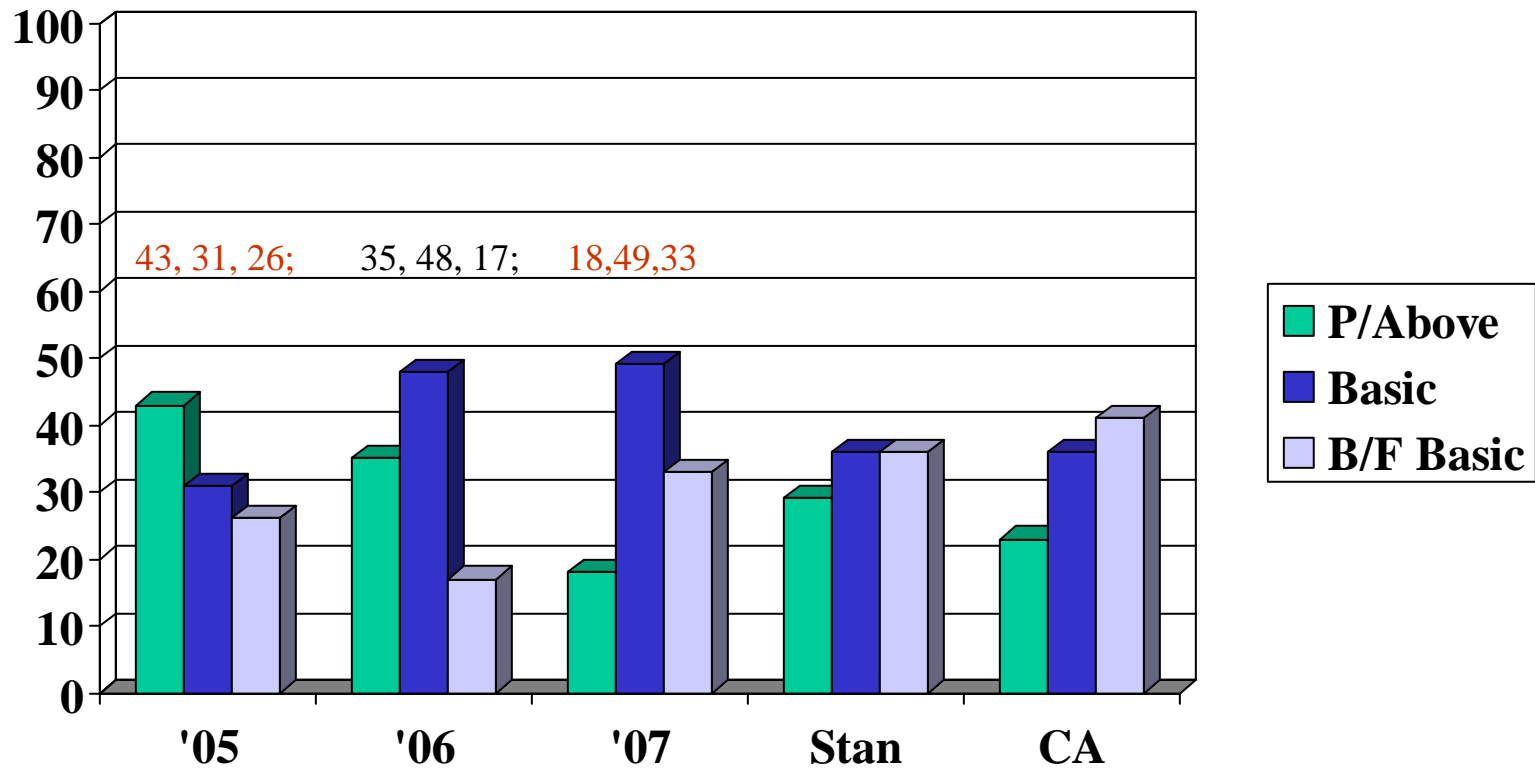
# Grade 6 - Mathematics



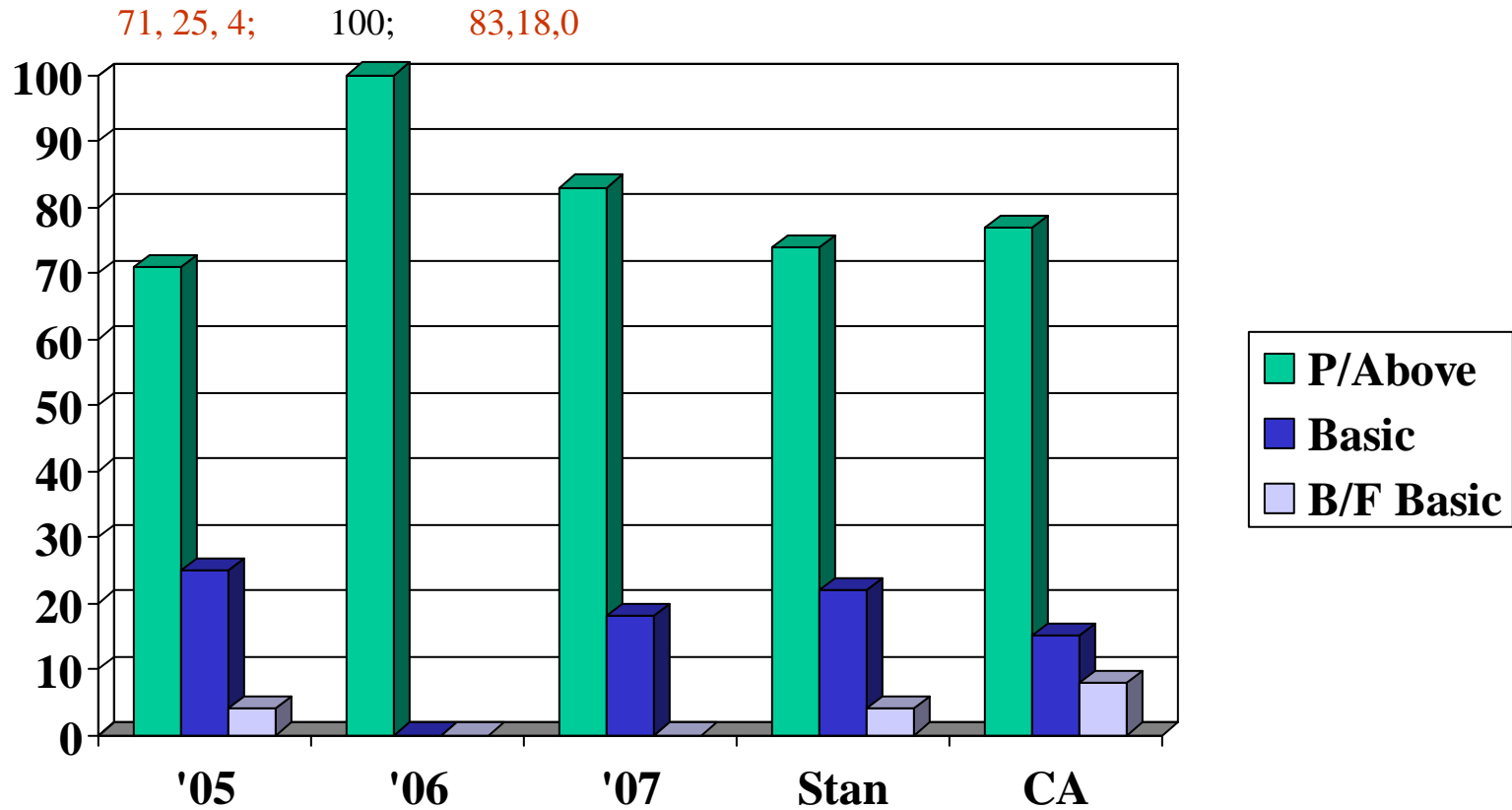
# Grade 7 - Mathematics



# Grade 8 - General Mathematics



# Grade 8 – Algebra I





Whole School

45.7% of Students

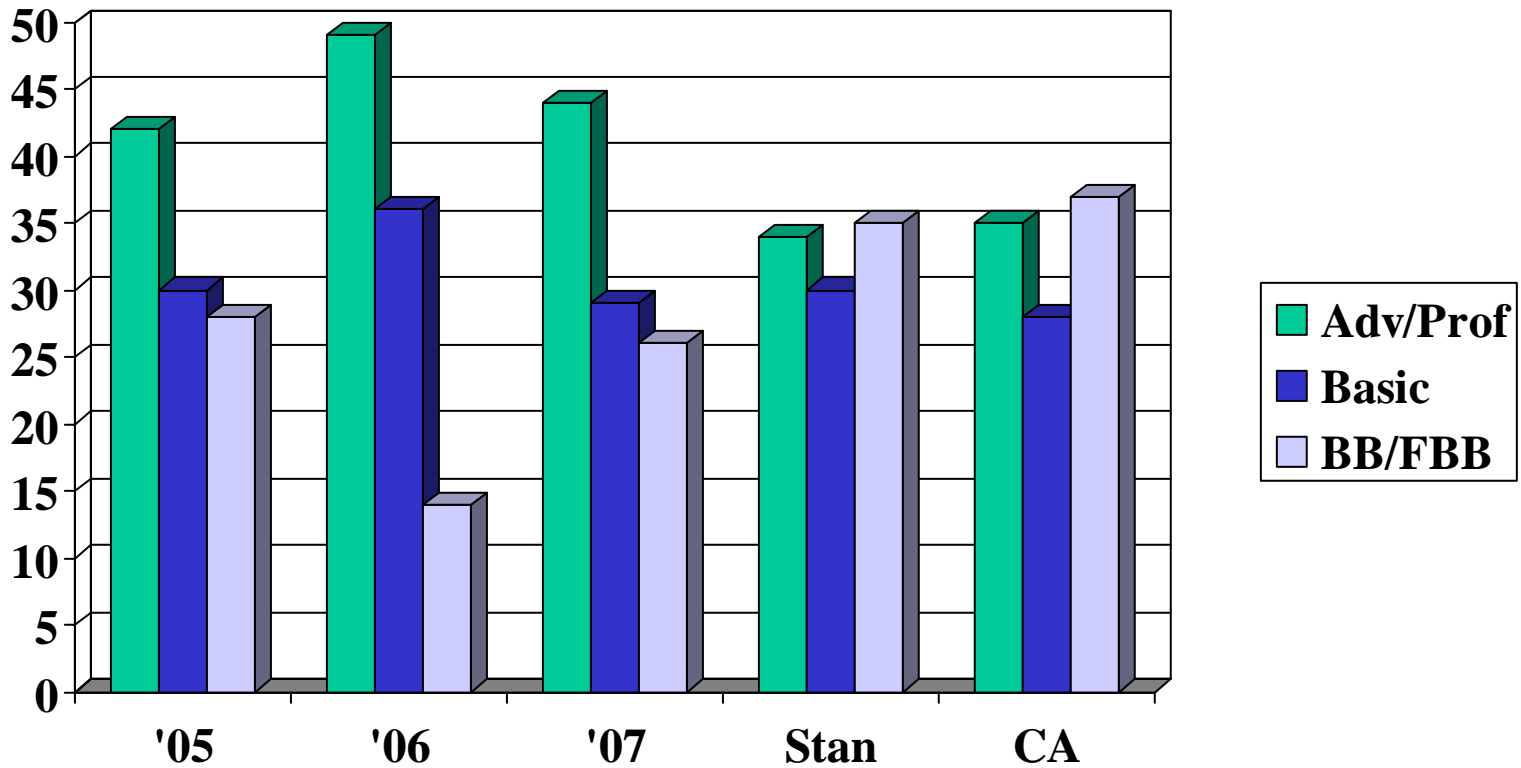
scored

proficient or above

in Mathematics

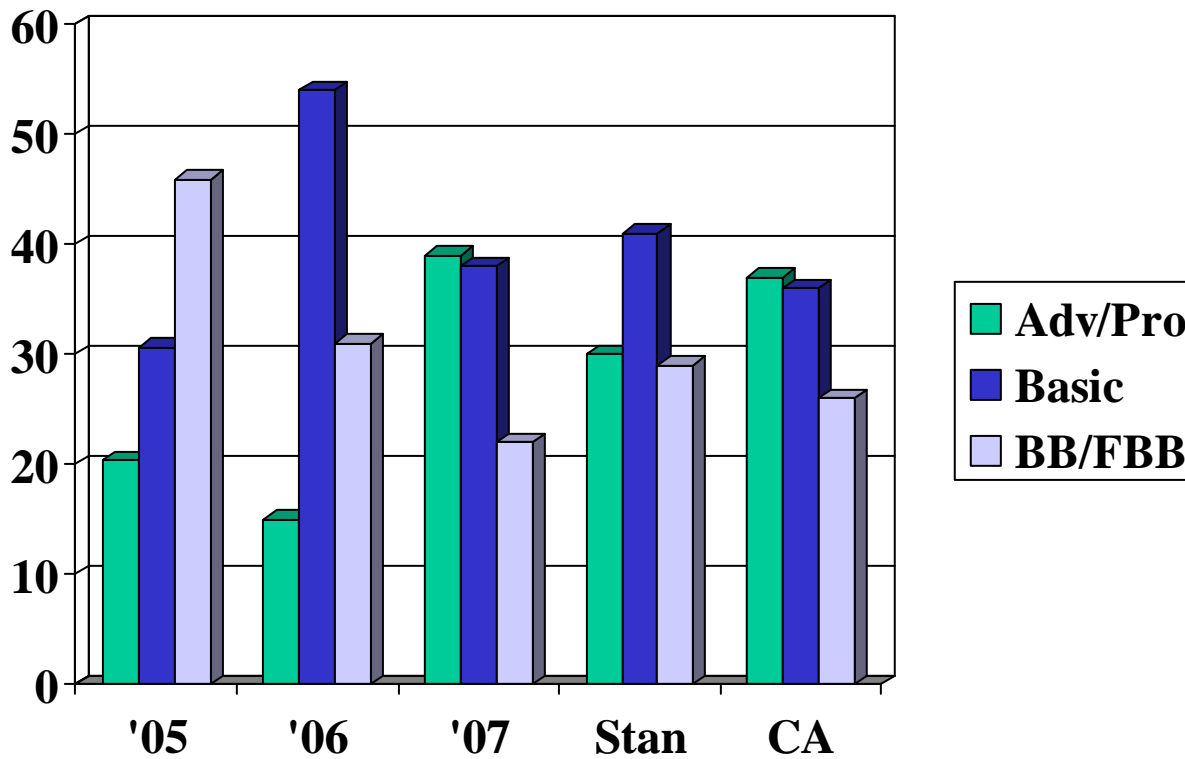
# CST Social Studies

42,30,28; 49,36,14; 44,29,26



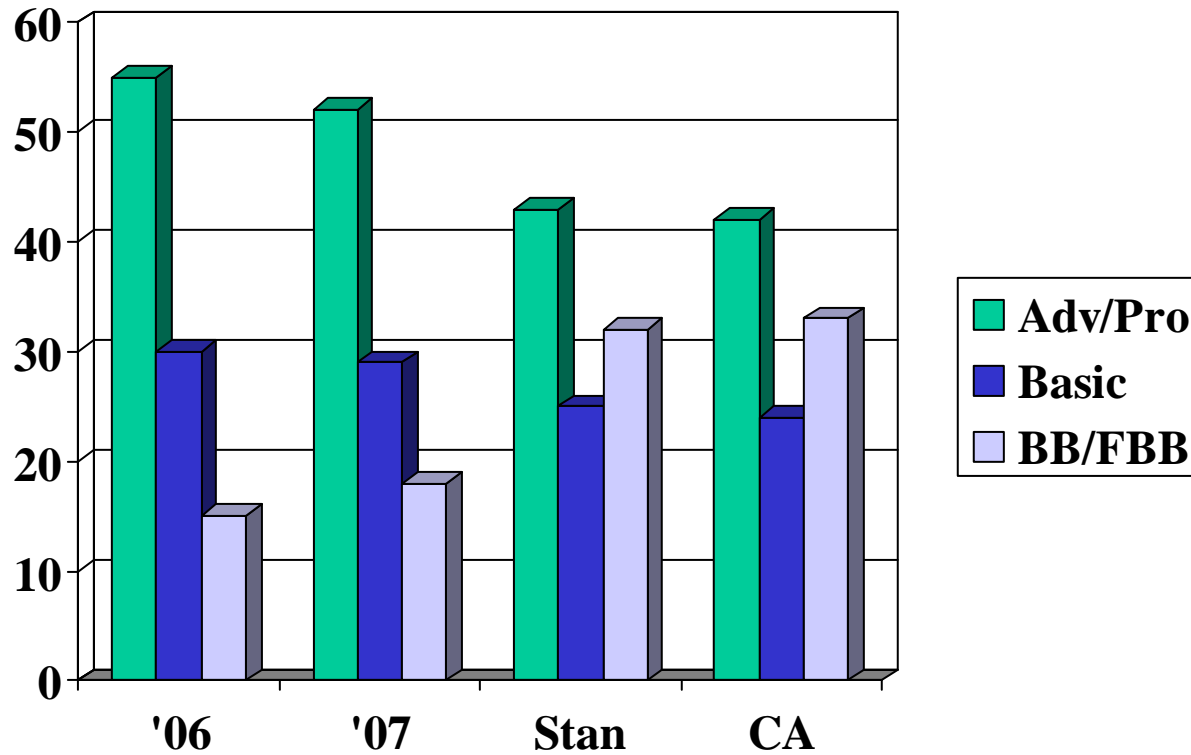
# CST Science 5<sup>th</sup> Grade

34, 39, 27; 15, 54, 31; 39, 38, 22



# CST Science 8<sup>th</sup> Grade

55, 30, 15; 52,29,18;



# Summary:

## Two Ways to Measure Student Achievement



**Adequate  
Yearly  
Progress (AYP)**



**Academic  
Performance  
Index (API)**

### ***Status Bar Model***

School's goal is to meet  
*performance targets!*

Yes or No

**No Child Left Behind  
(NCLB) Act of 2001**

### ***Improvement Model***

School's goal is to make  
*incremental improvement!*

score 200-1000; goal 800

**Public Schools  
Accountability Act  
(PSAA) of 1999**

# Continuing Improvement

*API:*

*2007 - 785*

*2006 - 775*

*2005 - 767*

*AYP:*

*2007 - Yes*

*2006 - Yes*

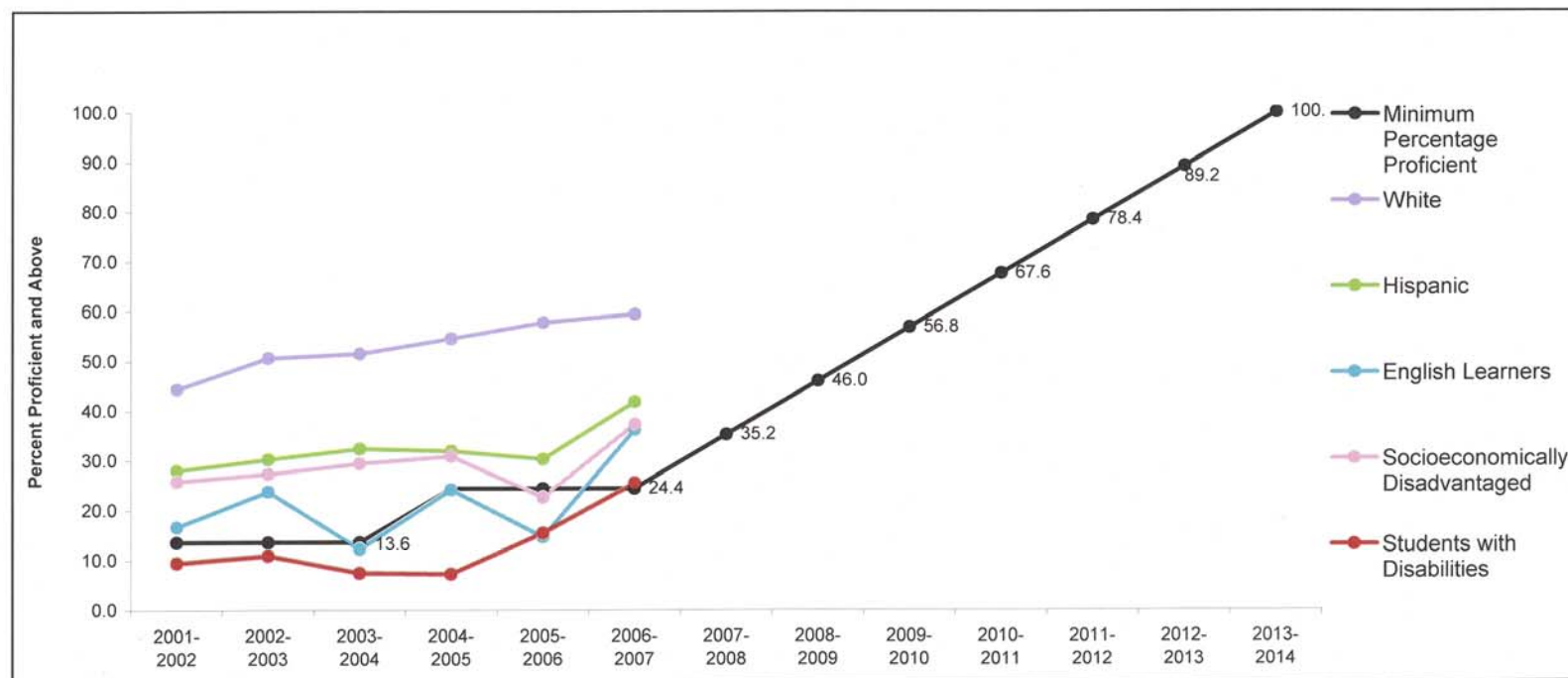
*2005 - Yes*

# Hart-Ransom Union Elementary School District

## English Language Arts Annual Measurable Objectives (AMO's)

### California Standards Tests + CAHSEE

School Year	2001-2002	2002-2003	2003-2004	2004-2005	2005-2006	2006-2007	2007-2008	2008-2009	2009-2010	2010-2011	2011-2012	2012-2013	2013-2014
<b>Minimum Percentage Proficient</b>	<b>13.6</b>	<b>13.6</b>	<b>13.6</b>	<b>24.4</b>	<b>24.4</b>	<b>24.4</b>	<b>35.2</b>	<b>46.0</b>	<b>56.8</b>	<b>67.6</b>	<b>78.4</b>	<b>89.2</b>	<b>100.0</b>
White	44.6	50.9	51.8	54.8	58.0	59.6							
Hispanic	28.2	30.5	32.6	32.1	30.5	42.0							
English Learners	16.9	24.1	12.5	24.4	14.9	36.4							
Socioeconomically Disadvantaged	26.1	27.6	29.7	31.1	22.8	37.5							
Students with Disabilities	9.6	11.1	7.6	7.4	15.6	25.6							

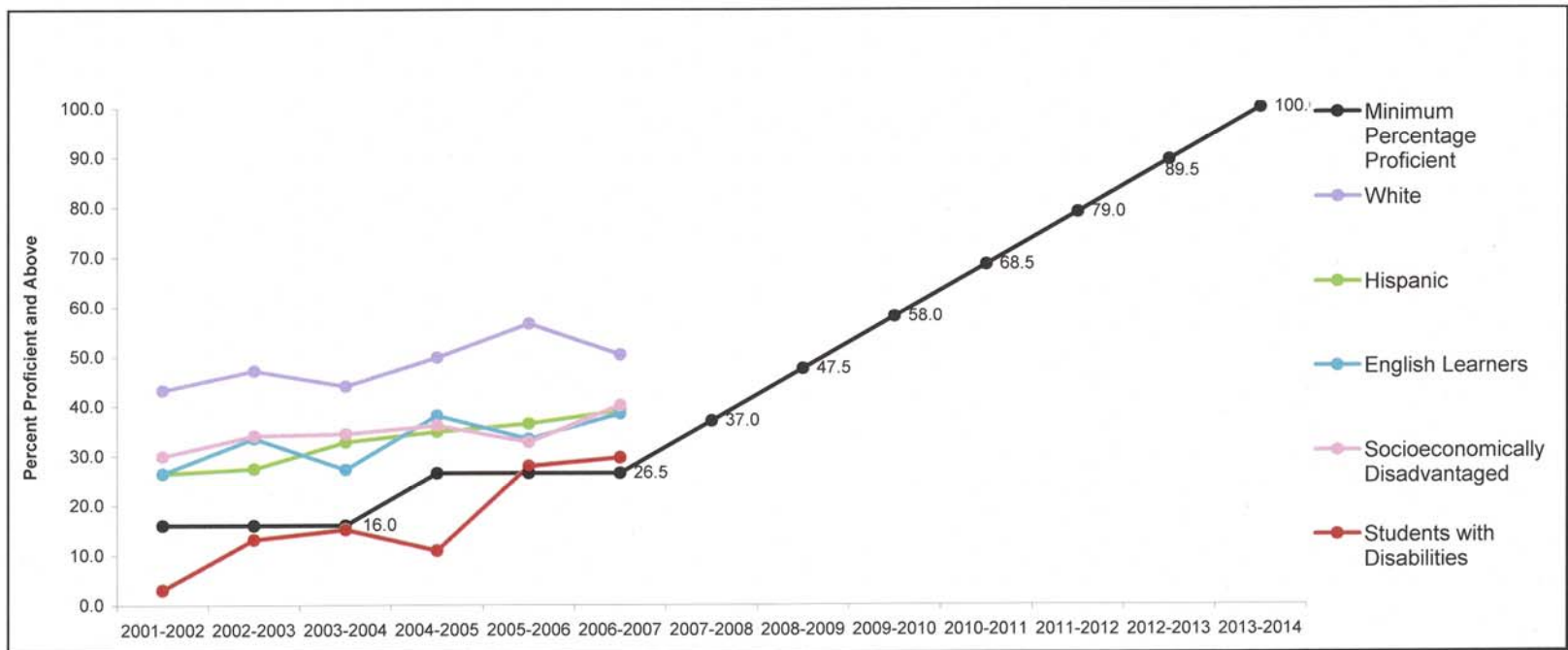


Lea wide in 07 = 53.1% proficient  
 LEA wide in 06 = 48.6% proficient  
 LEA wide in 05 = 48.7% proficient  
 LEA wide in '04 = 47.5% proficient  
 LEA wide in '03 = 45.5 % proficient  
 LEA wide in '02 = 40.3 % proficient

# Hart-Ransom Union Elementary School District

## Mathematics Annual Measurable Objective (AMO's) California Standards Test+ CAHSEE

School Year	2001-2002	2002-2003	2003-2004	2004-2005	2005-2006	2006-2007	2007-2008	2008-2009	2009-2010	2010-2011	2011-2012	2012-2013	2013-2014
<b>Minimum Percentage Proficient</b>	<b>16.0</b>	<b>16.0</b>	<b>16.0</b>	<b>26.5</b>	<b>26.5</b>	<b>26.5</b>	<b>37.0</b>	<b>47.5</b>	<b>58.0</b>	<b>68.5</b>	<b>79.0</b>	<b>89.5</b>	<b>100.0</b>
White	43.5	47.4	44.3	50.1	56.9	50.6							
Hispanic	26.6	27.6	33.0	35.1	36.7	39.3							
English Learners	26.7	33.8	27.5	38.4	33.7	38.7							
Socioeconomically Disadvantaged	30.2	34.3	34.7	36.4	33.0	40.4							
Students with Disabilities	3.2	13.3	15.3	11.1	28.1	29.8							



Lea wide in 07 = 45.7% proficient  
 LEA wide in 06 = 50% proficient  
 LEA wide in 05 = 45.7% proficient  
 LEA wide in '04 = 42.1 % proficient  
 LEA wide in '03 = 43.2% proficient  
 LEA wide in '02 = 39.6 % proficient

# Achievement Goals Attained and Set Higher

- Students and teachers have worked hard and have made progress
  - 10 point improvement
  - EL achievement on the increase, gap closing
- Our goal is to continue to improve achievement for all students



# Where do we go from here?

1. A Purpose

2. A Plan

3. The Part we all Play



# Our Purpose...

- \*To provide the best education possible for Hart-Ransom students

- \*To provide a caring, positive environment to facilitate learning

# A Plan

\*All students must know what is expected of them... and be given opportunity to excel.

\*Students must know the goal – standards – that they need to achieve.

\*Students must know what a proficient piece of work looks like and they must be allowed time and opportunity to become proficient.

# The Plan...

- Collegiality teams to set grade-level goals based on data.
- Give periodic common assessments to gather data.
- Analyze data and determine needs of students.
- Teams plan effective, research-based instruction to continue achievement for all students.

# The Plan...

\*The School Leadership Team has decided to work together with the Stanislaus County Office of education to develop more effective and efficient collegial work, thereby improving student achievement.

# The Part we all Play...

**The Board** – encouragement and continued clear decision making

**The Administration** – encouragement and shared leadership, personal interaction with students to promote learning for all

**The Staff** – regular collegial work, analyzing student work, developing standards-based lessons, personal interaction with students to promote learning for all

**The Students** – a clear understanding of their task and the willingness to work

**The Parents** – support for students at home regarding learning, and support of the school and staff

Together...we remain

Committed to Excellence

