



Hart-Ransom Union School District

"Bound For Success"

Hart-Ransom Academic Charter School



2002-2003 School Accountability Report Card

Sherry Smith, Director

shsmith@stan-co.k12.ca.us

3920 Shoemake Avenue
Modesto, CA 95358
Phone: (209) 523-0401
Fax: (209) 523-1064
www.hart-ransomcharter.com

Grades Kindergarten through Eight

Board of Trustees

Tim Byrd, President
Randy Heinrich, Vice President
Joe Goldeen, Clerk
Nancy Green, Board Member
Scott Vincent, Board Member

Superintendent

Dr. R. Ream Lochry

Contents

- Director's Message
- District Mission Statement
- School Mission Statement
- Community & School Profile
- Discipline & Climate for Learning
- Minimum Days & Instructional Minutes
- School Enrollment & Attendance
- Textbooks & Instructional Materials
- School Facilities & Safety
- Student Achievement & Standardized State Testing
- Academic Performance Index
- Counseling & Other Support Services
- Teacher Evaluation & Professional Development
- Teacher Assignment
- Substitute Teachers
- Curriculum Improvement
- School Leadership
- Special Events Calendar
- Community Involvement
- Contact Information
- Expenditures & Services Funded

Director's Message

Hart-Ransom Charter School opened in August of 1995, and it has been exciting to experience the tremendous growth and development of our home-based school. The families and staff are committed to excellence, and our Advisory Teachers, working along side these dedicated parents, strive to see that each child succeeds.

Credentialed Teachers assigned to each family provide support and guidance as the parents teach their children. We also offer many exciting classes to enhance the student's education. Among these classes are: American History, Art, Physical Education, Band, Science, Computers, Character 1st, and many more. Parent Workshops are offered during the year in the areas of reading, writing, and a variety of others, better preparing them in working with their students. Our staff, students and parents are excited about the unique educational opportunities we offer each individual student, and we look forward to many successful years ahead.

District Mission Statement

The Hart-Ransom Union School District, recognizing the uniqueness and worth of each child and committed to the individual success of its community's youth, will ensure a quality education that fosters the development of skills and attitudes necessary for life-long learning through a positive and safe learning environment in partnership with home and community.

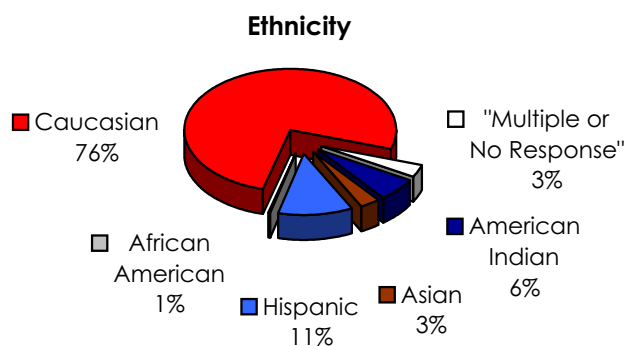
School Mission Statement

To support the Hart-Ransom Union School District Mission Statement, the Charter School will provide unique educational opportunities that enhance family life while addressing the needs and concerns of parents and children.

Community & School Profile

Hart-Ransom Charter School is located on the beautiful west side of Modesto, California surrounded by ranches and almond orchards. The school has strong roots in the community, many students come from families that have been affiliated with the Hart-Ransom Union School District for many years. Hart-Ransom Charter School is proud of its academic achievements, high standards for excellence and an on-going commitment to technology. The district consists of one traditional kindergarten through eighth grade campus and one Charter School that serves the needs of the local home-schooling community.

Located on the same campus as the district, Hart-Ransom Charter School was the 80th school to receive a charter from the state of California. The school opened in September of 1995 with 67 students and two staff members, and has been growing ever since. During the 2002-2003 school year 274 students were enrolled in grades kindergarten through eight. Once enrolled, every family is assigned a credentialed Advisory Teacher, who helps maintain their child's school records and select appropriate curriculum, promoting the success of the individual student.



Discipline & Climate for Learning

Students at Hart-Ransom Charter School are guided by specific rules and expectations that promote respect, cooperation, courtesy, and acceptance of others. The school's discipline philosophy promotes a safe school, a warm, friendly classroom environment, and demonstrates that good discipline is a solid foundation on which to build an effective school.

The district annually provides a Student Conduct Code for each of its sites which is supplemented by a set of behavioral standards developed by Hart-Ransom Charter School. The program's design establishes guidelines to provide students with a meaningful, productive, and enjoyable school experience.

In the event of habitual truancy, students may be referred to the Hart-Ransom Union School District's School Attendance Review Board (SARB). The SARB is utilized if students have persistent attendance and behavior problems in school, and when the normal avenues of classroom, school, and district counseling are not effective.

Hart-Ransom Charter School has not suspended or expelled any of its students during the past three years; expulsions occur only when required by law or when all other alternatives are exhausted. The following chart shows the Hart-Ransom Union School District's suspension and expulsion totals for the past three years.

Suspensions and Expulsions			
Hart-Ransom Union School District			
	01	02	03
Suspensions (#)	68	80	72
Suspensions (%)	7.5%	7.2%	7.4%
Expulsions (#)	1	0	1
Expulsions (%)	0.1%	0%	0.1%

Extracurricular Activities

Students are encouraged to participate in the school's additional academic and extracurricular activities. Considered an integral part of the educational program, these schoolwide opportunities promote positive attitudes and encourage achievement. Extracurricular activities and programs include the Science Olympiad, Spelling Bees, poetry contests, sports, field trips, and Color Guard. Hart-Ransom Charter School is extremely proud of its 2003 Science Olympiad Teams, the Division A placed first, while Division B placed first for small schools and first place overall for Stanislaus County.

The school also holds an annual Spring Festival where students present their projects in a variety of subjects including science, social studies, art and music. The following is a list of elective classes or extracurricular activities offered for the home-school student by Hart-Ransom Charter School:

- Computers
- Band
- Art
- Character 1st!
- Physical Fitness
- Hands-On Science
- Constitution
- Algebra

Minimum Days & Instructional Minutes

For the 2002-2003 school year, Hart-Ransom Charter School offered 180 days of instruction, with no minimum days. All instructional days either met or exceeded the daily instructional minute requirements specified in the California Education Code.

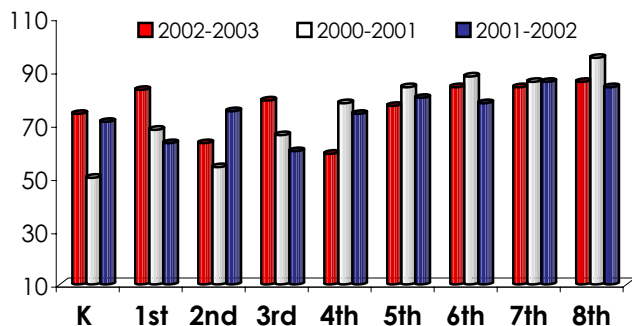
Instructional Minutes by Grade Level		
	Minutes Required	Actual Minutes
K	36,000	36,000
1st-3rd	50,400	50,400
4th-8th	54,000	54,000

School Enrollment & Attendance

Schoolwide enrollment at the beginning of the 2002-2003 school year was 274 students. The actual attendance rate for the Hart-Ransom Union School District for the 2002-2003 school year was 95%.

Due to the fact that Hart-Ransom Charter School is a home-study school, students are not required to attend classes on campus, although on-site classes are offered. The school also provides enrichment classes for assisting parents in the home-schooling process in the areas of reading, writing, algebra and other content areas.

Enrollment By Grade Level



Textbooks & Instructional Materials

Hart-Ransom Charter School sets a high priority upon ensuring that sufficient and current textbooks and materials are available to support the school's instructional program as well as provide students with their own textbooks. Most of the textbooks and instructional materials offered within the school are aligned with the California State Content Standards and Frameworks. Hart-Ransom Charter School usually follows the State Instructional Materials Adoption Cycle which reviews instructional materials in each curricular area within a seven-year cycle.

An administrator, teachers and parents form the Curriculum Committee, which establishes selection criteria based on test results, state standards, state adopted lists and piloting of certain curriculum. This committee makes recommendations to the Board of Trustees for final adoption.

Hart-Ransom Charter School has two computers in the classroom, both have Internet access. Although most families have home computers, the school has 17 computers available for students to check out.

Computer Resources

	2001	2002	2003
On-Site Computers	3	3	2
Off-Site Computers	4	15	17
Students per computer	33	15	14
Internet	1	1	1

During the 2002-2003 school year, new Glenco science textbooks and supplementary materials were purchased for grades 6-8. The school also began implementing the Accelerated Reader Program, which will provide a variety of reference books, assessment materials and reading tools for student and teacher use.

For the 2003-2004 school year, the school plans to adopt McGraw/Glenco science textbooks for grade K-5.

Current Textbooks

Subject	Publisher	Grade	Year Adopted
Reading/ Language Arts	Houghton-Mifflin	K-5	2002
	Prentice Hall	6-8	2002
Math	Houghton Mifflin	K-5	2001
	Saxon	K-8	1995
	Modern Curriculum Press	K-6	1997
	Silver Burdett & Ginn	K-8	1998
Science	Prentice Hall	7-8	2002
	Glenco/McGraw Hill	K-8	2002
Social Studies	Houghton-Mifflin	4-8	Pre-standard

The Education Center is stocked with a collection of instructional materials, including books, videotapes, audio tapes, and educational programs on CD-ROM for student use. Students are also encouraged to use the public library for additional instructional materials.

School Facilities & Safety

Hart-Ransom Charter School provides a safe, clean environment for students, staff, and volunteers. The district has a team of three custodians who ensure classrooms, restrooms, and campus grounds are kept clean and safe. A scheduled maintenance program is administered by Hart-Ransom Union School District to ensure that all facilities are well maintained. In the 2002-2003 school year, Hart-Ransom Charter School received new carpet, as well as a new portable building, which was added for individual and group meetings, as well as parent conferences.

The Hart-Ransom Charter School site is currently in the process of expanding. The school district has recently purchased the surrounding land in order to make additions to the facilities in multiple stages. The Hart-Ransom Union School District plans to begin the expansion in the 2003-2004 school year.

A comprehensive School Site Safety Plan, which is reviewed annually by the Hart-Ransom Union School District, is in place to ensure a secure, peaceful and clean environment for the school community. The school's disaster preparedness plan identifies procedures to follow during emergencies and natural disasters. Emergency drills are conducted regularly; fire drills are held monthly, and earthquake and campus secure drills are held twice a year.

For safety precautions the school's perimeter is securely fenced on all sides. Adult supervision is provided when students are on school grounds, and during attendance hours. All visitors must sign in at the office and receive proper authorization to be on campus. Visitors are asked by the staff to display their pass at all times.

Student Achievement & Testing

Various measures of student achievement are used as an ongoing part of the quality instructional program at Hart-Ransom Charter School. These measure students' actual progress as well as a measurement of the effectiveness of the instructional program.

Standardized State Testing

Hart-Ransom Charter School participates in California's Norm Referenced Test (NRT) (this was the Stanford-9 test up until 2002, but was changed to the California Achievement Test 6 [CAT-6] in 2003), California Standards Assessments, and the Spanish Assessment of Basic Education (SABE). The California Standards Tests aid in determining the level of individual student comprehension and knowledge of skills required by the California Content Standards for each grade or course; the NRT measures achievement based on student comparison; the SABE is an alternate assessment given to Spanish speaking students who have lived in California for less than one year.

Norm Reference Test (NRT)																					
% Students Scoring At or Above 50th Percentile																					
Grade Year Ending	2			3			4			5			6			7			8		
	01	02	03	01	02	03	01	02	03	01	02	03	01	02	03	01	02	03	01	02	03
Reading																					
Hart-Ransom Charter	50	47	76	64	63	61	70	62	47	69	61	58	67	71	76	43	75	86	75	73	76
HRUSD	55	49	49	47	54	43	60	50	44	60	59	49	59	67	62	67	60	60	73	70	56
California	51	53	46	46	47	34	47	49	35	45	46	41	47	48	45	48	48	45	50	49	41
Math																					
Hart-Ransom Charter	56	35	66	51	61	44	62	67	56	69	61	53	71	68	61	50	67	86	60	55	48
HRUSD	55	56	58	48	63	50	66	60	48	63	72	43	67	73	58	68	61	59	72	71	56
California	58	62	41	59	62	42	54	58	43	54	57	44	57	60	40	50	52	41	49	50	43
Language																					
Hart-Ransom Charter	44	45	62	67	60	64	67	66	65	73	67	63	67	71	61	29	58	68	75	55	68
HRUSD	60	59	41	49	60	57	64	60	54	64	74	49	64	75	55	69	66	57	70	74	56
California	53	55	57	51	53	53	54	57	48	53	55	49	54	56	51	56	57	46	52	52	48
Spelling																					
Hart-Ransom Charter	44	25	38	46	50	47	38	62	41	58	56	53	76	61	48	43	67	64	45	36	60
HRUSD	50	44	43	50	56	52	50	46	57	60	56	47	52	63	52	57	62	63	47	46	50
California	53	55	53	51	53	53	46	49	56	49	52	50	46	49	49	49	51	53	38	40	49



Academic Performance Index

The Academic Performance Index (API) is one of three components of the Public Schools Accountability Act (PSAA) passed in 1999. The API measures school performance, sets academic growth targets, and monitors growth over time based on NRT results. If a school meets its growth targets, including subgroup targets, it may be eligible to receive monetary and non-monetary awards.

The percent tested is calculated by dividing the number of students tested by enrollment in grades tested as indicated in the October CBEDS School Information Form. The API scale is 200-1000; calculations only include scores for students in the district the prior school year. Rankings are presented in deciles (high of 10, low of 1), each of which contains 10% of all schools. The growth target is equal to 5% of the difference between the 2000 API and the interim Statewide Performance Target of 800. Schools that reach their annual targets are eligible for monetary awards. Schools that do not meet their targets and have a statewide API rank of one to five are eligible to participate in the Immediate Intervention/Underperforming Schools Program (II/USP), which provides resources to schools to improve their academic achievement.

The Immediate Intervention/Underperforming School's Program and the Governor's Performance Award Program are the two remaining components of the PSAA Act. Due to specific criteria, including API and SAT-9 results, Hart-Ransom Charter School did not qualify to participate in either program during the 2002-2003 school year.

API School Results

	Base				Growth		
	2000	2001	2002		00-01	01-02	02-03
Percent Tested	99	100	N/A	Percent Tested	100	99	N/A
API Score	691	708	730	API Growth Score	710	711	N/A
Growth Target	5	5	4	Actual Growth	19	3	N/A
Statewide Rank	6	6	7	Eligible for Awards	No	No	N/A
Similar Schools Rank	1	1	1	Eligible for II/USP	No	No	No

California Standards Test

% of Students Scoring at Advanced and Proficient Levels

	Language Arts																				
	2			3			4			5			6			7			8		
	01	02	03	01	02	03	01	02	03	01	02	03	01	02	03	01	02	03	01	02	03
Hart-Ransom Charter	37	29	41	43	43	36	30	50	56	54	39	52	45	61	51	21	50	72	40	0	52
HRUSD	30	30	36	30	41	36	38	35	53	42	36	42	37	42	50	45	47	56	46	52	44
California	32	32	36	30	34	33	33	36	39	28	31	36	31	30	36	32	33	31	32	32	38

	Math																				
	2			3			4			5			6			7			8		
	01	02	03	01	02	03	01	02	03	01	02	03	01	02	03	01	02	03	01	02	03
Hart-Ransom Charter	*	31	48	*	26	31	*	41	32	*	17	31	*	53	47	*	29	68	*	*	*
HRUSD	*	41	49	*	34	37	*	35	49	*	24	28	*	53	39	*	37	47	*	*	*
California	*	43	53	*	38	46	*	37	45	*	29	35	*	32	34	*	30	30	*	*	*

* Data unavailable.



Counseling & Other Support Services

It is the goal of Hart-Ransom Charter School to assist students in their social and personal development as well as academics. The counseling staff provides special attention to students who experience achievement problems, difficulty coping with personal and family problems, trouble with decision-making, or handling peer pressure. All counseling and support services are provided on an as-needed basis for all students by the Hart-Ransom Union School District.

Counseling & Support Services Staff

Services shown are provided for the Hart-Ransom Union School District

	<u>Number of Staff</u>	<u>Full Time Equivalent</u>
Academic Counselor	1	0.6
Nurse	1	0.4
Psychologist	1	0.25
Resource Specialist	1	1.0
Speech/Language Specialist	1	0.6

Hart-Ransom Charter School has the services of an English as a Second Language (ESL) Teacher, who is provided by the district. The ESL teacher works with English Language Learners (ELL) students on a pull-out basis, who receive additional instruction at the appropriate level. A Speech and Language Specialist and Resource Specialist provide pull-out instruction for students who need additional assistance.

Hart-Ransom Charter School offers the Powerline Reading Program which requires additional training for teachers who provide students Powerline tutoring. Powerline tests students to see if they qualify for this reading instruction, and tests them at the end of each school year to monitor their growth. The school has trained three teachers to work with students struggling in reading, and have had tremendous success over the past three years utilizing Powerline. In addition, students may receive tutoring in-class, in all subject areas, which is provided by credentialed teachers.

Teacher Evaluation & Professional Development

A constructive evaluation process promotes quality instruction and is a fundamental element in a sound educational program. Evaluations and observations are designed to encourage common goals and to comply with the state's evaluation criteria and district policies. Evaluations are conducted twice a year by Hart-Ransom Charter School's director, who has been trained for competency to perform teacher evaluations. The evaluation process consists of three distinct parts: teacher performance, professionalism and personal qualities.

Evaluation criteria are: Engaging and Supporting All Students In Learning, Understanding and Organizing Subject Matter for Student Learning, Assessing Student Learning, Creating and Maintaining Effective Environments for Student Learning, Planning Instruction and Designing Learning Experiences for All Students, and Developing as a Professional Educator.

Hart-Ransom Charter School offers a number of staff development days for Advisory Teachers and staff. Staff members build teaching skills and concepts through participation in occasional conferences and workshops on a monthly basis. During the 2002-2003 school year monthly staff development days were held; topics included Writing Rubrics, Math Manipulatives, Reading Assessments, Team Building and more.

Teacher Assignment

Hart-Ransom Union School District recruits and employs the most qualified credentialed teachers. For the 2002-2003 school year, Hart-Ransom Charter School had 12 fully credentialed teachers who met all credential requirements in accordance with state guidelines.

Teacher Credential Status

	<u>01</u>	<u>02</u>	<u>03</u>
Fully Credentialed	11	12	12
Emergency Credentials	0	0	0
Waivers	0	0	0
Total Teachers	<u>11</u>	<u>12</u>	<u>12</u>
Average Years Teaching	10.4	10.3	11.3
Average Years in District	3.5	3.8	4.8

Hart-Ransom Charter School supports efforts made by teachers to attain additional education and training through local colleges and universities for their personal growth as well as for the benefit of the school. During the 2002-2003 school year, staff consisted of 15 employees (including administrators), all with 30+ additional units beyond their bachelor's degree.

Substitute Teachers

Hart-Ransom Charter School does not experience any problems finding qualified substitutes. On rare occasions the school may need a substitute to cover a teacher who will be out of work for an extended period of time. An Advisory Teacher will fill the position.

Curriculum Improvement

All training and curriculum development at Hart-Ransom Charter School revolves around the California State Content Standards and Frameworks. Teachers align curriculum to ensure that all students are striving to meet or exceed state proficiency levels. Teachers also utilize test scores and individual student needs to assess the current curriculum.

The writing and implementation of Hart-Ransom Charter School's curriculum is an ongoing process. Advisory Teachers, parents and the director are all involved with the curriculum decisions. The school's curriculum guides are updated regularly to align with the state standards, district goals, and the statewide assessment program.

The district provides time and resources for collaboration, planning, and professional development for all staff. A Beginning Teacher Support and Assessment (BTSA) facilitator works with beginning and veteran teachers on improving their skills and addressing the California Standards for the Teaching Profession. In addition, Hart-Ransom Union School District's Peer Assistance and Review (PAR) program provides new teachers and effected veteran teachers with personal support, guidance, and mentoring.

School Leadership

Leadership at Hart-Ransom Charter School is a responsibility shared between the director, instructional staff, students, and parents. The district's emphasis is on a well-balanced and rigorous core curriculum at all grade levels. Instructional programs are aligned with state and district standards.

For the past eight years Sherry Smith has been the dedicated director of the Hart-Ransom Charter School. Prior to this position she worked as a classroom teacher, a student tutor, and also worked with home school families for 17 years.

Staff members and parents participate on various committees that make decisions regarding the priorities and direction of the educational plan. These committees ensure instructional programs are consistent with students' needs and comply with district goals. These committees/teams include the Key Result Areas (KRA) and the Parent Connection.

The KRA (Key Result Areas) are committees that oversee various needs of the Hart-Ransom Charter School. The KRA Teams are divided each year among the entire staff. Each staff member has the ability to choose from four key areas including Customer Service, Facilities Improvement, Internal Process and Curriculum Committees. The teams meet regularly and report updates at the monthly all-staff meetings.

The Parent Connection, consisting of parents and staff, is an advisory body that meets monthly to address programs and components that make up the school. They discuss ideas, and the value of the various programs relative to the goals of the school, acting as a communication liaison between the community and the school.

Special Events Calendar 2003-2004

- Back to School Picnic and Social
Thursday, August 28th
- Back to School Skate
Friday, September 12th
- Family Camp Out
Friday & Saturday, September 26th-28th
- Spring Registration Reception
Thursday, December 11th
- Fall 2003 Registration & Curriculum Selection
Tuesday-Thursday, February 24th-26th
- Writing Testing
Thursday, March 18th
- CAT-6 Testing
Monday-Friday, May 3rd-7th
- Spring Festival
Thursday, May 20th
- Eighth Grade Graduation
Thursday, June 3rd
- Year End Bash/Summer Kick-Off
Watch your Newsletter!



Community Involvement

As a home based program, parents are naturally supportive of the education program of Hart-Ransom Charter School. The school also encourages parents to volunteer in various capacities and to participate in the Parent Connection. Hart-Ransom Charter School also offers parent and student workshops, covering topics such as creative writing, poetry, math manipulatives, and various reading programs.

Contact Information

Parents who wish to participate in Hart-Ransom Charter School's leadership teams, school committees, school activities, or become a volunteer may contact the main office at (209) 523-0401. The school's website (www.hart-ransomcharter.com) also provides a variety of information for students, parents and community members.

Expenditures & Services Funded

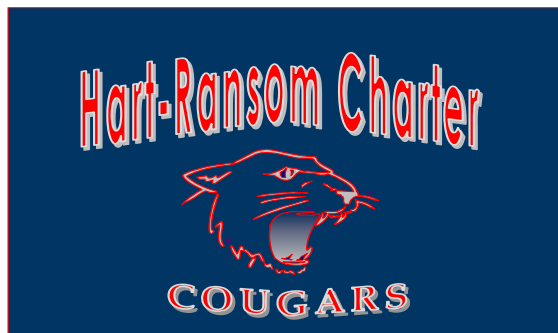
Hart-Ransom Union School District spent an average of \$5,743 to educate each student (based on 2001-2002 audited financial statements). The figures shown in the table on the right reflects the direct cost of educational services, per ADA, excluding food services, facilities acquisition and construction, and certain other expenditures. This calculation is required by law annually and compared with other districts statewide.

Current Expense of Education Per Student*

Statewide Average

Hart-Ransom Union School District	All Elementary School Districts	All Districts
\$5,743	\$6,444	\$6,719

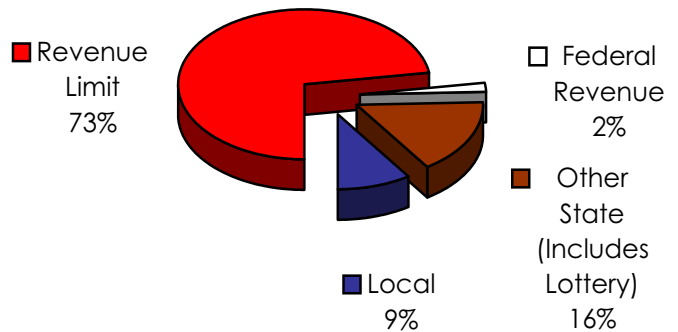
*Ed-Data and California Department of Education, School Fiscal Services Division - J-200 Reports.



Hart-Ransom Charter School receives Block Grant Funding for all expenses and instructional costs incurred. In addition to general fund state funding, Hart-Ransom Union School District receives state and federal funding for the following categorical, special education, and support programs:

- Title I - Low Income
- Title II - Eisenhower
- Title VI - Innovative Strategies
- Title VI - Class Size Reduction (CSR)
- Title IV - Safe and Drug Free Schools and Communities
- Student Improvement Program (SIP)
- Economic Impact Aid (EIA)
- Tobacco Use Prevention Education (TUPE)
- Miller-Unruh Reading

District Revenue Sources



District Expenditures

